

Part Number:

1990636

Models:

Classic 500cc

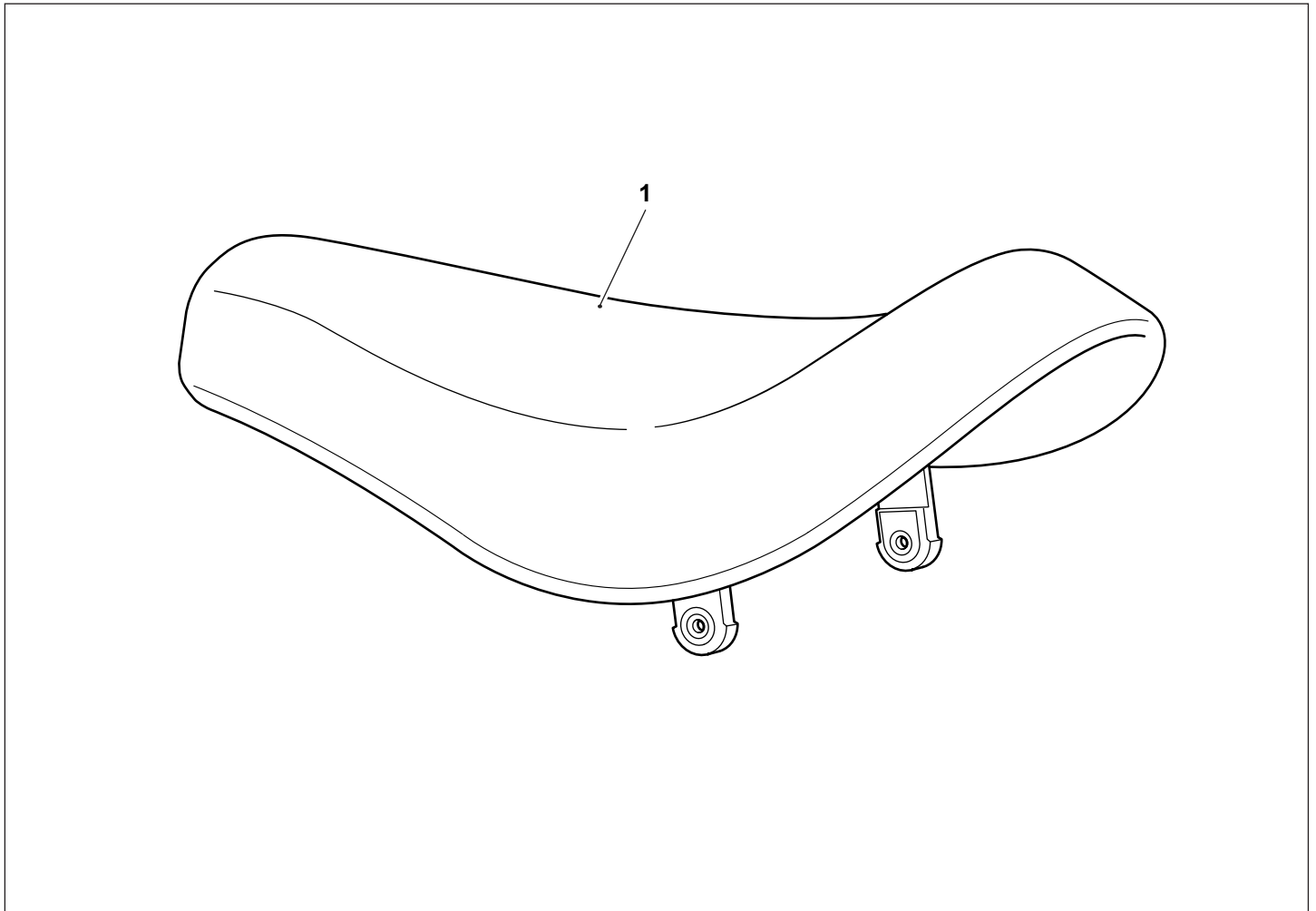
WARNING: Royal Enfield genuine accessories are designed to fit only the specific Royal Enfield motorcycle(s) that are specified above. They should not be fitted to any other type of motorcycle. Pay particular attention to the warnings and cautions contained in this instruction, failure to do so may result in an incorrect installation of the accessory which could result in an unsafe riding condition and possible accident. If in any doubt always seek the help from your authorised Royal Enfield dealer.

WARNING: Before starting any accessory kit installation ensure the motorcycle is supported in a stable condition. Failure to support the motorcycle correctly could lead to motorcycle damage or personal injury.

WARNING: All fixings must be tightened to the torque values specified in this instruction. Failure to tighten fixings to the correct torque could result in an unsafe riding condition and possible accident.

CAUTION: Care should be taken when fitting any accessory kit. Incorrect handling kit components or the use of incorrect tools could lead to component or motorcycle damage.

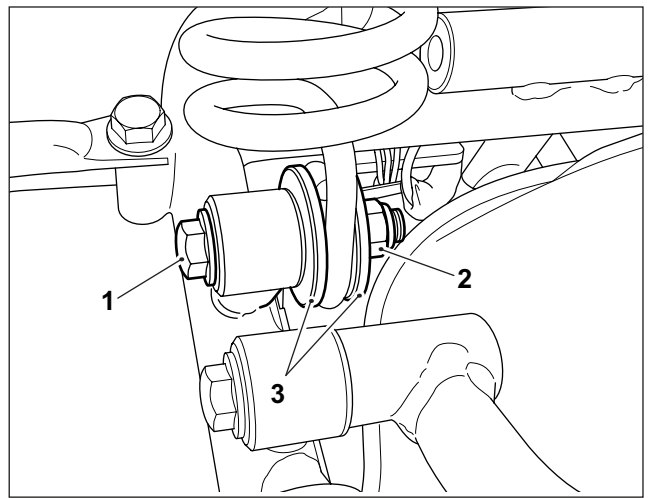
NOTE: The content of this instruction is subject to change at any time without notice or liability. Royal Enfield reserves the right to revise the information presented at any time.



Item	Description	Qty
1	Low seat	1

1 Remove the seat rear fixings (1), nuts (2) and spring collars (3) from the left hand side of the motorcycle. Retain the fixings (1) for reuse. Retain the nuts (2) and spring collars (3) for reuse if the original seat is to be refitted.

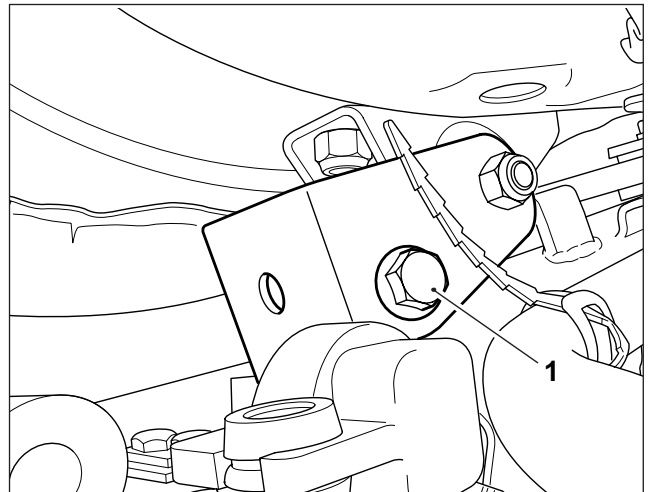
Repeat for the right hand side of the seat.



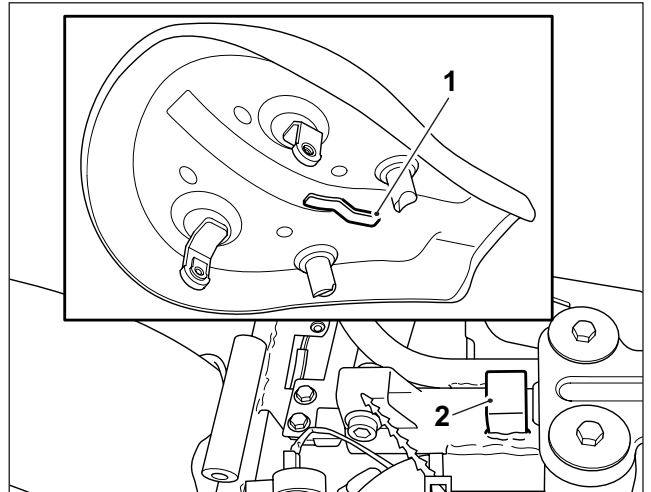
2 Remove the front seat fixing (1) from the right hand side of the motorcycle. Remove the seat. Retain the seat and fixing for reuse if the original seat is to be refitted.

NOTE: California models only.

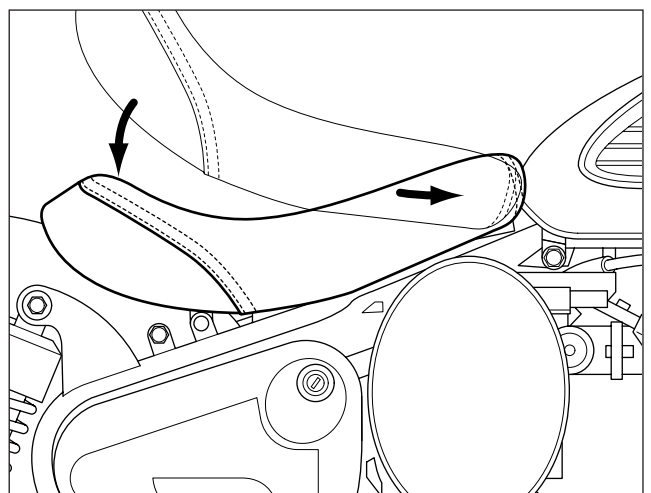
For models carrying emission vent pipes, the pipework must be re-routed under the frame rails.



3 When fitting the new seat provided, the seat retaining strap (1) on the underside of the seat must be positioned under the mounting bracket (2) on the motorcycle frame.



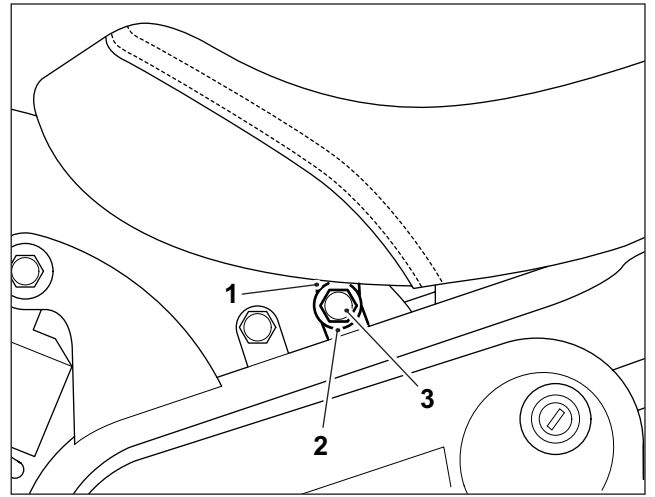
4 With the seat retaining strap located under the mounting bracket, as described above, slide the seat forward as far as possible towards the fuel tank, while lowering the rear of the seat, to fully engage the seat strap under the mounting bracket.



5 Align the right hand seat rear mounting bracket (1) with the original seat mounting point (2) on the motorcycle frame. Loosely fit one of the original fixings (3) as shown.

Repeat for the left hand side of the seat.

Tighten both fixings to **30Nm**.



⚠ Check the new seat is securely attached to the motorcycle. To prevent movement or possible detachment of the seat during riding, always grip the front of the seat by hand and pull firmly upwards. If the seat retaining strap is not correctly located under the front mounting bracket it will allow movement or possible detachment of the seat while riding. A loose or detached seat may cause the motorcycle to become unstable and result in an accident.

⚠ After fitting any genuine Royal Enfield accessory always ride the motorcycle with caution and allow time to become familiar with any change in the motorcycle handling characteristics. Failure to become familiar with any change in the motorcycle handling characteristics may cause the motorcycle to become unstable and result in an accident.